

# PRE-ARRIVAL

University of California, Irvine



**UCI** International Center

# INTERNATIONAL CENTER LOCATION

- The International Center is located at:
  - G302 UCI Student Center, Irvine, CA 92697-5255 (3<sup>rd</sup> Floor)
  - Building #113 on UCI Campus Map
- Contact Information
  - Web: [www.ic.uci.edu](http://www.ic.uci.edu)
  - Email: [internationalcenter@uci.edu](mailto:internationalcenter@uci.edu)
  - Phone: 949.824.7249



# INTERNATIONAL CENTER SERVICES

- F-1 & J-1 Visa advising for UCI International Student & Scholar population
- SEVIS Regulation Compliance
- Programs, Workshops, & Events
- Provide training and advising for UCI campus partners
- Stay updated on changes that effect international students, scholars, and the UCI campus
- Assistance with U.S. Government Offices

# TRAVELING TO UCI

University of California, Irvine

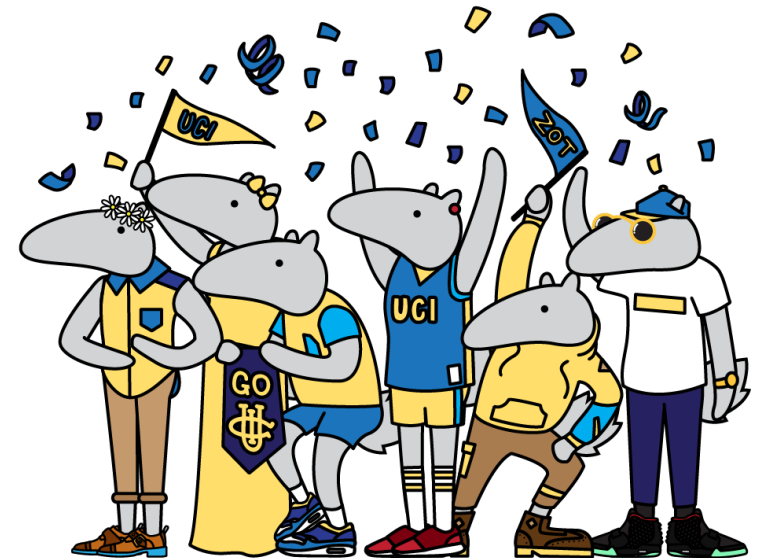
Irvine



**UCI** International Center

# RECEIVING YOUR I-20/DS-2019

- New Students
  - Request Visa Document, Check Visa Document Status, Applying for a visa
- I-20's and DS-2019's will be sent electronically in an email from DocuSign.
- You must print your document for travel into the U.S.
- If you are a transfer student, your document cannot be issued from UCI until your previous school has released your SEVIS record.



# PAYING THE SEVIS FEE

- The SEVIS fee is paid by F-1 and J-1 students and scholars to cover the cost for the operation of SEVIS. This is a government fee that is paid directly to the U.S. government through [www.fmjfee.com](http://www.fmjfee.com)
- You will use the SEVIS number from your I-20/DS-2019 to pay the SEVIS fee
- The SEVIS fee payment receipt is required at the time of applying for your visa.



# DOCUMENTS NEEDED AT PORT OF ENTRY

Make sure you have the following documents at the port of entry to enter the U.S.:

- I-20 or DS-2019
- Valid Passport
- F-1 or J-1 Student Visa
- Financial Documents
- Proof of Admission to UCI
- I-901 Receipt of SEVIS Fee

# UNDERGRADUATE ORIENTATION

Two components of [Orientation](#): You must complete both Online Orientation and In-Person Orientation

## Online Orientation

- Can work on this at your own pace
- Should get an email to your UCI e-mail address for how to access this platform

## In-Person Orientation

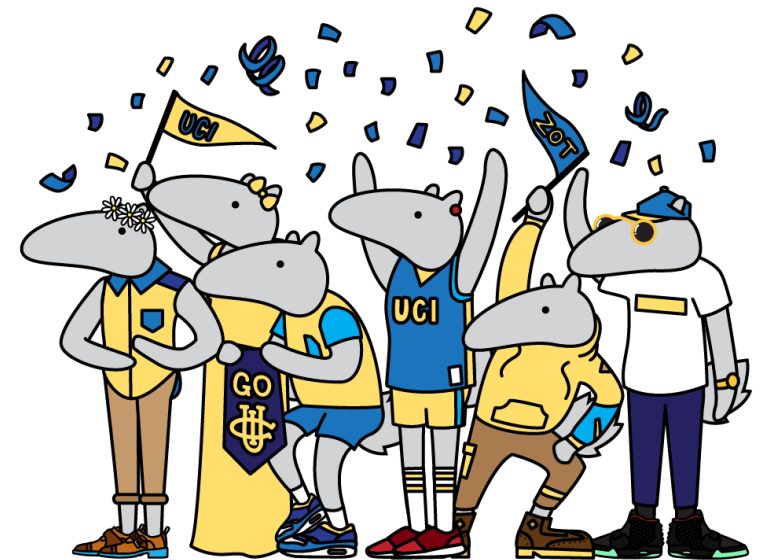
- Can attend any SPOP, but International Students are recommended to attend ISPOP on Thursday, September 21, 2023 and Friday September 22, 2023
- ISPOP is for international students only, so it is a great opportunity to meet fellow international students.
- Should get an email to your UCI e-mail address to register





# EAP ORIENTATION

- Zoom Orientation for EAP Students on Wednesday, September 20, 2023 from 4PM-5:45 PM
- Should get an email to your UCI e-mail address to register



# GRADUATE ORIENTATION

Graduate Orientation is made up of eight online modules (including a bonus module for international students). You should get an email to your UCI e-mail address for how to access this platform.

## SAVE THESE DATES

- **July 17th** – Modules 1 and 2 open for all students
- **July 17th** – Special “International Graduate Student Guide” module opens for international students
- **August 21st** – Modules 3 through 8 open for all students
- **October 2nd** – In-person Resource Fair (Separate invite to come via email)

For any questions, please email [gradorientation@uci.edu](mailto:gradorientation@uci.edu)

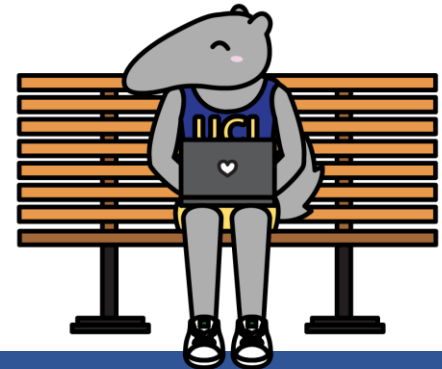


# CHECK-IN AFTER ARRIVAL

- As an F-1/J-1 international student, you **MUST** complete the International Center Visa Check-In process.
- [iNavigateUCI](#) is the International Center's electronic visa check-in process and it is required for all new international students; it is used to report your arrival to the Department of Homeland Security and to "activate" your SEVIS record.
- iNavigateUCI will provide you with required information to help you understand your visa status and requirements and responsibilities to maintain legal visa status.
- You will be required to provide an address of where you live in the U.S. and a copy of your I-94 document (arrival document).

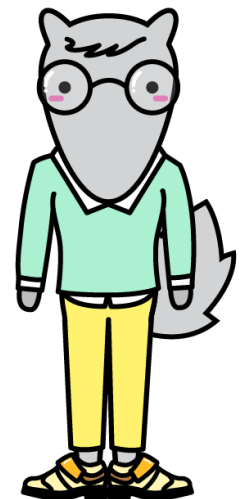
**DO NOT COMPLETE INAVIGATE UNTIL YOU HAVE ARRIVED OR ARE INSIDE OF THE U.S.**

**iNavigateUCI must be completed within 5 days of the PROGRAM START DATE  
on your I-20/DS-2019 visa document.**



# ENROLLMENT EXPECTATION

- Full-Time Enrollment is **REQUIRED** during academic year (12 units)
- Must be enrolling in majority of in person units each quarter.
- Summer does not require enrollment, unless it is your first or last quarter.
- With authorization from the International Center there are 3 reasons you may enroll below 12 units:
  - Academic Difficulty
    - Usually During 1<sup>st</sup> Year
    - Allowed ONE time during degree programs
  - Medical
    - Doctor's Note
  - Last Quarter
    - Less than 12 units to complete



# RESOURCES

University of California, Irvine



**UCI** International Center

# WHAT TO PACK

You can purchase many items you may need during your time at UCI after you arrive, but it is still important to bring some essential items with you:



**Travel Documentation**  
**\*DO NOT PACK IN  
CHECKED LUGGAGE**



**Prescription Medication**



**Chargers and/or converters**



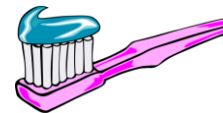
**Local Currency (USD)**



**Comfortable shoes**



**Clothing**



**Toiletries**



**Items that remind  
you of home!**

# WHERE TO SHOP

There are local stores that are walking distance to campus for items you forgot to bring or need to purchase upon arrival:

**University Center:** A shopping center located across the street from UCI which is home to many restaurants.

**Target:** Located at University Center selling toiletries, grocery items, dormitory needs, some apparel, and has a pharmacy located inside.

**Trader Joe's:** A grocery store/market located at University Center.

**Albertsons:** A grocery store/market located about a 10-15 minute walk from UCI.

**Local Malls/Shops:** There are 3 local malls within driving distance from campus, Fashion Island, South Coast Plaza and Irvine Spectrum

# BANKING

There are multiple different banks located in the areas surrounding UCI

Bank of America	2600 San Miguel Drive, Newport Beach, CA 92660	<a href="https://www.bankofamerica.com/">https://www.bankofamerica.com/</a>
Chase Bank	4543 Campus Drive, Irvine CA 92612	<a href="https://www.chase.com/">https://www.chase.com/</a>
Citibank	5000 Birch Street, Newport Beach, CA 92660	<a href="https://online.citi.com/US/login.do">https://online.citi.com/US/login.do</a>
Schools First Federal Credit Union	UCI Student Center, A311 Student Center, Irvine, CA 92697	<a href="http://www.schoolsfirstfcu.org/">http://www.schoolsfirstfcu.org/</a>
Wells Fargo	18044 Culver Dr, Irvine, CA 92612	<a href="https://www.wellsfargo.com/">https://www.wellsfargo.com/</a>
U.S. Bank	4100 Newport Place Drive, Suite 100, Newport Beach, CA 92660	<a href="http://www.usbank.com/index.html">http://www.usbank.com/index.html</a>



# TRANSPORTATION

- Walk
- Bike
- Uber/Lyft
- [ANTEATER EXPRESS](#)
  - UCI shuttle for on campus commuting
- Orange County Transportation Authority (OCTA) Bus
  - A local bus service
  - University memberships available through [UCI Transportation and Distribution Services](#)
- Shuttle options from LAX:
  - [Prime Time Shuttle](#)
  - [Super Shuttle](#)
  - [Shuttle to LAX](#)



# ADDITIONAL RESOURCES



- Academic Concerns
  - Undergraduate departments contact information: <https://academicadvising.uci.edu/offices/>
  - Graduate departments contact information: <https://grad.uci.edu/admissions/degree-programs/>
- Housing
  - Please connect with UCI Student Housing for all housing related questions
  - If you will ever live off campus, be cautious about online apartment searching if you will ever live off campus
  - Contact information: [housing@uci.edu](mailto:housing@uci.edu) or 949-824-6811
- Student Health
  - Please connect with UCI Student Health for any health-related concerns or vaccination questions
  - Contact information: 949-824-5301

A photograph of a stone wall at the University of California, Irvine. The wall features the university's name in large, raised letters and a circular seal on the right side. The seal depicts a book and a sun, with the text 'THE UNIVERSITY OF CALIFORNIA' and '1868'. The background shows a blue sky with clouds and some greenery.

# INTERNATIONAL CENTER PROGRAMS

**UCI** International Center

# INTERNATIONAL CENTER COURSES

## International Students Transitioning to Educational and Personal Success (I-STEPS): 1.3 UNITS

- Learn more about U.S. culture in a comfortable environment
- Receive tips and suggestions on how to succeed academically and socially at UCI
- Create a network of friends, staff, and faculty at UCI
- Explore on-campus resources and services

To sign up, scan the QR code on the flyer!



**FALL 2023**

### I-STEPS Course

INTERNATIONAL STUDENTS TRANSITIONING TO EDUCATIONAL AND PERSONAL SUCCESS

I-STEPS is created for international students to learn about U.S. culture, meet new friends, explore on-campus resources and services to succeed at UCI!

**Receive 1.3 units (p/np)!**

**Topics include:**

- ✓ Understanding U.S. Classrooms
- ✓ Time Management
- ✓ American Slang & Idioms
- ✓ Cultural Adjustment
- ✓ and more!

**Available Sessions: (Location TBA)**

- ✓ Mondays @ 11-11:50am
- ✓ Tuesdays @ 10-10:50am
- ✓ Tuesdays @ 4-4:50pm
- ✓ Fridays @ 10-10:50am

**SIGN-UP HERE: [WWW.TINYURL.COM/ISTEPSF23](http://WWW.TINYURL.COM/ISTEPSF23)**

UCI International Center

Questions? Visit [www.ic.uci.edu](http://www.ic.uci.edu) or Email [icprograms@uci.edu](mailto:icprograms@uci.edu)

# INTERNATIONAL CENTER COURSES

FALL 2023 UCI International Center

## English Conversation Program

1.3 units p/np class

Monday Tuesday Wednesday Thursday



Choose a section that works best for you:

MONDAYS	4-4:50PM	STUDENT CENTER
TUESDAYS	4-4:50PM	STUDENT CENTER
WEDNESDAYS	4-4:50PM	STUDENT CENTER
THURSDAYS	4-4:50PM	STUDENT CENTER

Enroll as an International Student or English Facilitator to:

- Practice English Conversation Skills
- Build Intercultural Communication Skills
- Learn about different cultures
- Meet new people!

SIGN-UP: [WWW.TINYURL.COM/ECPF23](http://WWW.TINYURL.COM/ECPF23)

QUESTIONS?

Visit [www.ic.uci.edu](http://www.ic.uci.edu) or email [icprograms@uci.edu](mailto:icprograms@uci.edu)

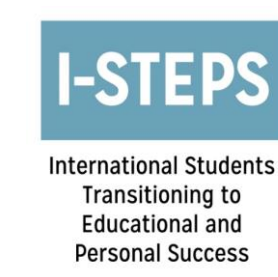
## English Conversation Program (ECP): 1.3 UNITS

- Offered Fall, Winter, and Spring Quarters
  - One hour conversation class for 10-weeks
  - Participants learn about different cultural perspectives, intercultural communication skills, and recognize the value of our diverse campus community.

To sign up, scan the QR code on the flyer!

# INTERNATIONAL CENTER PROGRAMS

- Across the Bridge
- Cultural Connections
- Explore Southern California
- Helping Hands
- Immigration Workshop Series
- International Coffee Hour
- Life in the U.S. Series



# INVOLVEMENT WITH THE INTERNATIONAL CENTER

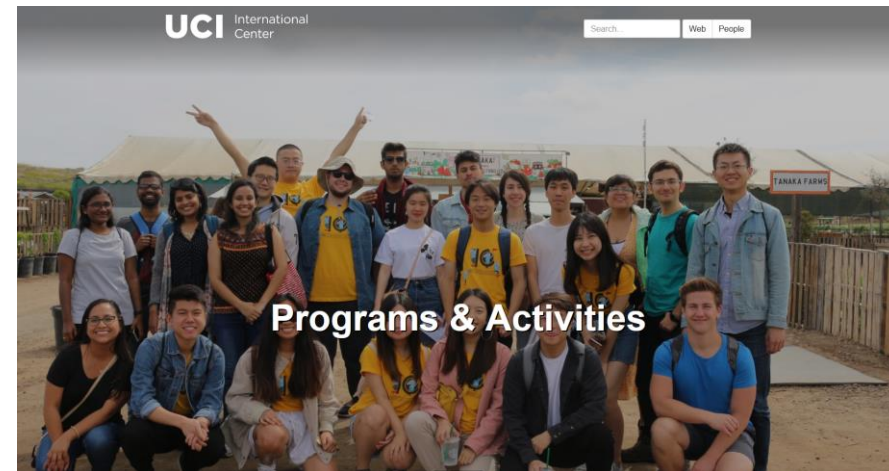
- We hope to see you at International Center's Welcome Picnic in Aldrich Park during UCI's Welcome Week on **Friday, September 22, 2023**. The Welcome Picnic is to welcome new and returning international students, staff, faculty, and their families to UCI.
- [Volunteer](#) with our office!



# CONNECT WITH THE INTERNATIONAL CENTER



- Follow us on Social Media!
  - [Facebook](#)
  - [Instagram](#)
- [International Center Programs](#) Website →





**THANK YOU**

University of California,

IRVINE

**QUESTIONS?**

**INTERNATIONALCENTER@UCI.EDU**



**UCI** International Center